

August 2020, Kottlingbrunn/Austria

PRESS RELEASE

WITTMANN BATTENFELD Highlights 2020

WITTMANN BATTENFELD presents its highlights digitally

Since Fakuma 2020 has been postponed to next year due to the health risks arising from the SARS-CoV-2 virus, WITTMANN BATTENFELD has decided to present the exhibits originally planned for the Fakuma and several other interesting applications in the form of product videos, and post them on a “Virtual Fakuma” portal.

Presentation of the videos will take place primarily in personal meetings with customers; web conferences are also planned as an alternative. To present the product highlights as vividly as possible to a wide public, the product videos will also be made available on the company's YouTube channel.

An innovation: the Ingrinder

With the Ingrinder, WITTMANN BATTENFELD has created an innovative solution to promote the recycling economy. This product is an injection molding system with integrated sprue picker, granulator and vacuum conveyor. The granulator and the sprue picker can be operated via the machine's UNILOG B8 control system.

WITTMANN BATTENFELD presents this innovation on a machine from the servo-hydraulic *SmartPower* series, a *SmartPower* 60/210. On the machine, a can with a lid is produced from PS with a 2-2-cavity mold. A WP50 sprue picker from WITTMANN with swivel drive removes the sprue and passes it to the G-Max granulator integrated in the system. The material recycled by the granulator is then transported to the machine's material hopper by a FEEDMAX S3 vacuum conveyor. The WITTMANN vacuum conveyors enable alternating conveyance of virgin material and regrind, so that a thorough blend is created by this process, together with discharge of the material into the hopper.

High-speed *EcoPower Xpress* for the packaging industry

Another highlight that WITTMANN BATTENFELD will demonstrate to its existing and prospective customers is a machine from the *EcoPower Xpress* series. This *EcoPower Xpress* is an all-electric, high-speed and high-performance machine model primarily of interest for thin-walled applications in the packaging industry. An *EcoPower Xpress* 300/1100+ equipped with the new WITTMANN SONIC 131 top-entry robot will be shown. This robot can be used for applications with a robot cycle time from 4 s. With a mold supplied by Abate, Italy, this machine will produce a margarine tub from PP within a cycle time of 4 seconds.

Medical application on *MicroPower 15/10* production cell

Moreover, WITTMANN BATTENFELD will demonstrate its expertise in the field of medical technology with a machine from the *MicroPower* series conceived for the production of micro parts in a clean room version. Using a *MicroPower 15/10* with 150 kN clamping force, a micro retaining ring for medical miniature tubes will be produced from PC with an 8-cavity mold supplied by Wittner, Austria. This product has a part weight of only 2 mg.

The machine comes with a rotary unit, an integrated WITTMANN W8VS2 robot and a camera for complete parts inspection. Following removal and camera inspection, the parts are transferred to transport containers, separated according to individual cavities.

LSR application on *SmartPower 120*

The important WITTMANN BATTENFELD technology for LSR processing is presented by producing a drink timer made of LSR on a machine from the servo-hydraulic *SmartPower* series, a *SmartPower 120/350*, with a 2-cavity mold supplied by Nexus, Austria. The injection unit in open design enables easy integration of the LSR metering unit. The Nexus X200 metering unit comes with a new servomix metering system with OPC-UA integration. In the mold, latest cold runner technology is used including FLOWSET needle shut-off control. Parts removal and depositing will be handled by a W918 robot from WITTMANN.

Completely updated integrated MES TEMI+

All WITTMANN BATTENFELD machines can be connected to the MES solution TEMI+ from ICE-flex. TEMI+ is specifically designed and optimized for the needs of the plastics industry and provides advanced OEE calculations and data integration of molding machines via Euromap 63 or 77, as well as auxiliary equipment via WITTMANN 4.0/OPC UA. The new version of TEMI+ comes with a completely new HMI engine, a powerful Production Planner and the optional IMAGOxt package for graphical measurements such as energy consumption.

Although the frontend HMI has only undergone minor modifications from previous versions, the underlying framework technology is entirely new, allowing for fast operator interaction and highest stability. The updated Production Planner however has changed significantly in the new version, enabling intuitive additions and shifting of production jobs via drag & drop, an extended planning of maintenance cycles and an easy-to-understand weekly job agenda. The optional IMAGOxt package creates graphs for energy or material consumption. Actuators and alarm responses can be programmed directly from the TEMI+ interface.



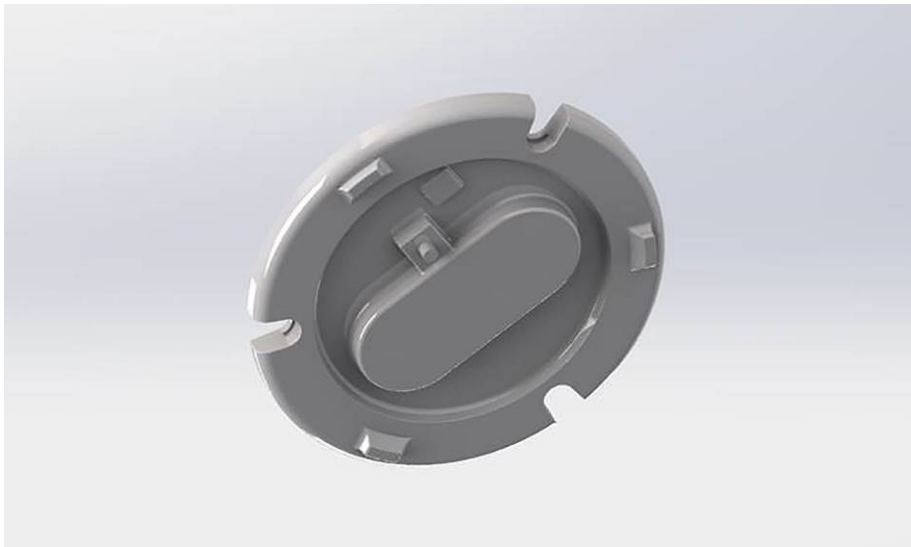
Fig. 1: *MicroPower 15/10 MEDICAL*



Fig. 2: Micro retaining ring for medical miniature tubes with a part weight of 2 mg



Fig. 3: EcoPower Xpress 300/1100+



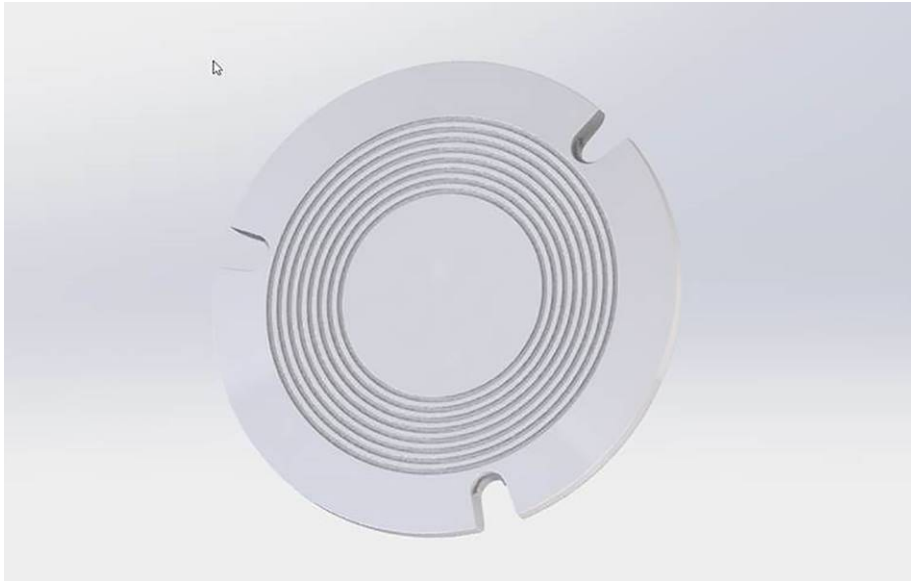


Fig. 4a + 4b: LSR drink timer – bottom part and coaster (Pictures: Nexus)

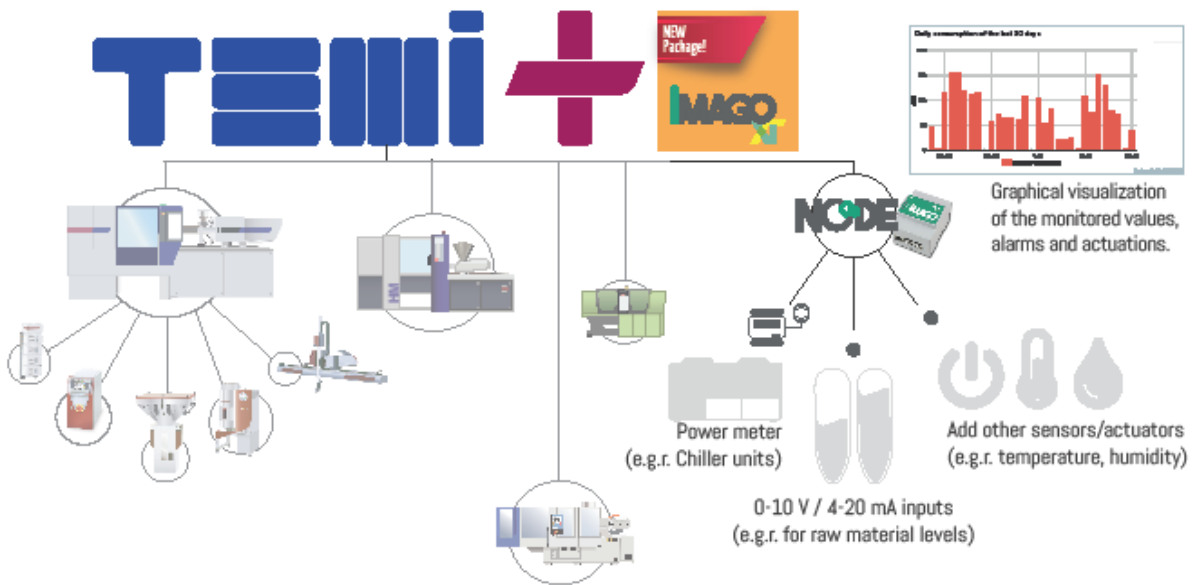


Fig. 5: Integrated TEMI+ MES, updated version

The WITTMANN Group

The WITTMANN Group is a worldwide leader in the production of injection molding machines, robots and auxiliaries for the plastics processing industry, headquartered in Vienna/Austria and consisting of two main divisions: WITTMANN BATTENFELD and WITTMANN. They jointly operate the companies of the group with eight production plants in five countries, and its additional sales and service companies are active with 34 facilities on all important plastics markets around the world.

WITTMANN BATTENFELD pursues the further expansion of its market position as an injection molding machine manufacturer and specialist for state-of-the-art process technologies. As a supplier of comprehensive, modern machine technology in modular design, the company meets both present and future market demands for plastics injection molding equipment.

The WITTMANN product portfolio includes robots and automation systems, material handling systems, dryers, gravimetric and volumetric blenders, granulators, temperature controllers and chillers. With this diversified range of auxiliaries, WITTMANN offers plastics processors solutions to cover all production requirements, ranging from independent production cells to integrated plant-wide systems.

The syndication of the various segments under the umbrella of the WITTMANN Group has led to complete connectivity between the various product lines, for the benefit of plastics processors with an increasing demand for seamless integration of processing machinery with automation and auxiliaries.

Contact:

WITTMANN BATTENFELD GmbH

Wiener Neustädter Strasse 81

2542 Kottlingbrunn, Austria

Tel.: +43 22252 404-1400

info@wittmann-group.com

www.wittmann-group.com