

SmartPower B8X 38 – 300 t

Servo-hydraulic efficiency

world of innovation



EFFICIENT – PRECISE – VERSATILE

The smart basis for your success

The advantages

- » Highly compact servo-hydraulic injection molding machine with outstanding stability
- » High-precision injection units with extensive equipment options
- » Top efficiency with „Drive-on-Demand 2.0“ drive system as standard
- » Additional energy saving through patented KERS energy recovery system
- » User-friendly thanks to Unilog B8X control system with integrated assistance systems
- » Short mold changing time through ergonomically optimized clamping system
- » Conversion into a full production cell possible with WITTMANN auxiliaries and the Wittmann 4.0 “Plug & Produce” integration package
- » Attractive price/performance ratio





SmartPower B8X

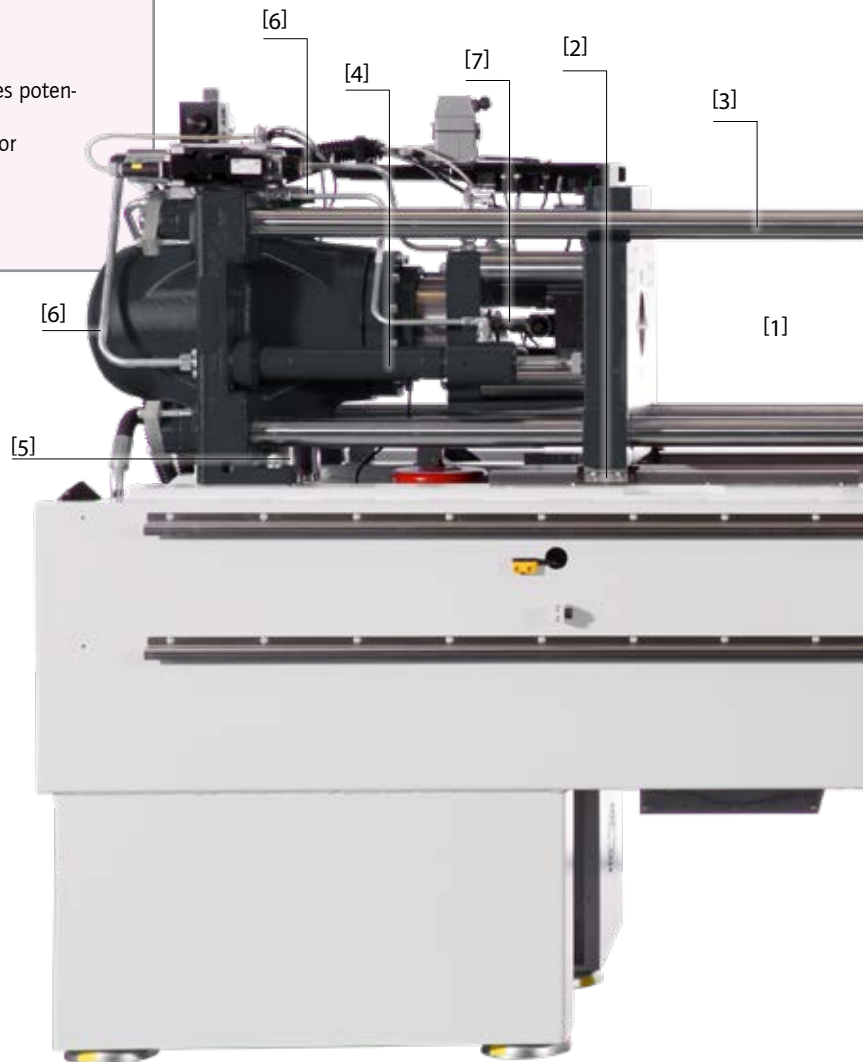
The system highlights

- » **Servo drive is standard for the hydraulic system ("Drive-on-Demand 2.0")**
All SmartPower B8X machines are equipped with a combination of fast-responding servo motors with high-performance fixed displacement pumps as standard. The system benefits are extreme dynamism, high speed and precision of the machine movements and minimal energy consumption.
- » **Plasticizing unit – compact, maintenance-friendly**
All SmartPower B8X plasticizing/injection units are pivo-table and designed for easy access. This offers optimal conditions for quick access to the screw. Optionally a servo electric screwdrive is available.
- » **KERS – the optimal energy utilization system**
The patented KERS (Kinetic Energy Recovery System) for injection molding machines transforms the kinetic energy released by deceleration processes into electrical energy. The resulting electrical power is utilized within the machine, e. g. for barrel heating. KERS enables an additional energy consumption cut of up to 5%.
- » **Well-balanced clamping system protects the molds**
The 4-pillar clamping system, with force transmission via a central pressure pad and two diagonally positioned fast-stroke cylinders, ensures optimal force transmission into the mold and simultaneously a high level of mold protection.
- » **Sensitive mold protection**
Without coming into contact with the tie-bars, the moving platen is guided on linear guides and rotating roller bearings via a sturdy moving carriage with a high load capacity for heavy molds. The minimal rolling friction of the moving platen guide system offers ideal conditions for highly sensitive mold protection and cleanness.

CLAMPING UNIT

A perfectly balanced power pack

- » **Ample space for the mold and for symmetrical force distribution**
Generously dimensioned mold platens and a clamping system with perfect symmetrical force distribution provide an optimal environment for all kinds of injection molding tools, including all types of media connections. [1]
- » **Sensitive and precise**
Within the SmartPower B8X clamping system, the exclusive task of the tie bars is force transmission between the external platens. Without tie bar contact, the moving platen travels on the linear bearings virtually free of friction [2]. In very few steps, the tie bars can be optionally retracted and reset. [3]
- » **Fast movements**
 - The moving platen is driven by two diagonally positioned travel cylinders. [4]
 - Combination of the travel cylinders with a hydraulic differential gear system enables quick movements.
 - The travel cylinders are dimensioned for high opening forces. [4]
- » **Compact design for minimal footprint**
The suction valve placed at the bottom of the pressure cylinder reduces the length of the clamping unit to a minimum. [5]
- » **Maintenance-friendly and easy to clean**
 - Ample use of rigid hydraulic tubes in lieu of hoses reduces potential maintenance requirements. [6]
 - Easy access to the ejector area and platen environment for machine setting [7]



INJECTION UNIT

Versatile precision

Wittmann

- » **Everything designed for series stability**
 - All screws > 25 mm come with a 22:1 L/D ratio.
 - Ultimate repeatability with an optional controlled servo valve
 - Momentum-free nozzle system thanks to axial positioning of the travel cylinders [8]
 - Plasticizing barrels can be fitted to different injection units with identical screw diameter
 - WITTMANN BATTENFELD HiQ software modules (optional) offer sensitive control strategies to compensate external factors such as temperature, moisture, regrind or masterbatch content variations.
- » **Optimal operability and flexibility**
 - Free access to the injection unit for easy material feeding, machine setting and servicing
 - All injection units up to size 3400 are pivotable (for quick screw replacement)



Anti-wear options

In addition to the premium-quality standard equipment, an extensive range of options is available to provide extra anti-wear and/or anti-corrosion protection. Predefined option packages and a selection matrix facilitate the selection of the right plasticizing unit.

DRIVE TECHNOLOGY

Energy efficiency with "Drive-on-Demand 2.0"



Fast-response, precise, economical

"Drive-on-Demand 2.0" is the innovative combination of a fast-responding, speed-controlled and air-cooled servo motor with a high-quality constant displacement pump. The fast response speed is further enhanced by a booster unit specially developed in-house, which enables a higher clock frequency. This drive unit is only activated as long as required for movements and pressure generation. During cooling times or cycle breaks for parts handling, the servo drive is switched off and consumes no energy. During operation, "Drive-on-Demand 2.0" provides the basis for highly dynamically controlled machine movements and short cycle times.

The "Drive-on-Demand 2.0" system is standard equipment of the SmartPower B8X machine series.

A brake on operating costs

- » The "Drive-on-Demand 2.0" system is standard equipment.
- » "Drive-on-Demand 2.0" lowers energy consumption by up to 35 per cent compared to modern variable displacement pump systems.
- » Additional energy cost cuts through reduction of idle power
- » Lower total expense for cooling, since oil cooling is normally not required
- » Lower maintenance expense through longer preservation of the oil quality due to less thermal load
- » Lower sound emission levels, consequently less investment in sound protection required
- » Easy retrofit of a second servo drive package for parallel movements [1]



INSIDER CONCEPT

"ex works" production cell

Wittmann

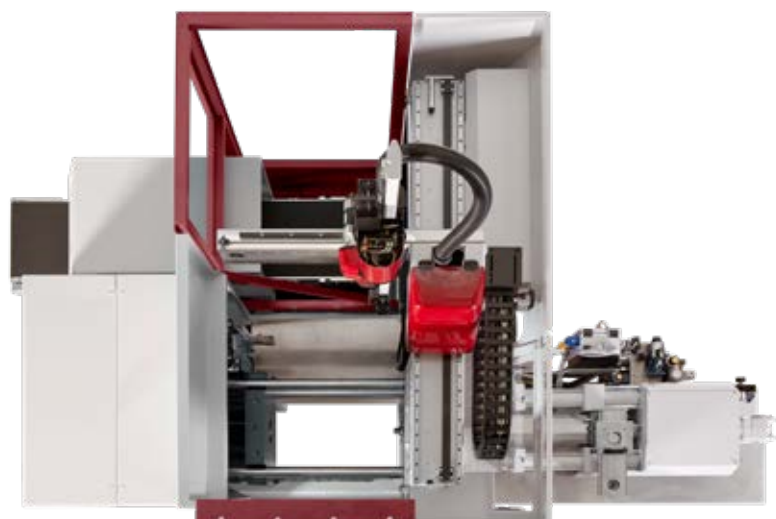
The insider concept is an ex-works solution to transform a SmartPower B8X injection molding machine into a fully fledged production cell. In its basic version, the equipment cell integrates a parts handling system, a conveyor belt for parts transport and a protective housing firmly connected with the machine. Additional equipment modules for further processing, quality documentation and packaging are available as options. For the design and configuration of such higher automation levels, the WITTMANN Group places the combined expert knowledge of the entire group at its customers' disposal.

The advantages of insider automation

- » **Material flow systematization**
thanks to a uniform logistics interface for finished parts transfer at the end of the clamping unit, a prerequisite for positioning of several machines in rows
- » **Reduction of production space**
by up to 50 % compared to conventional automation solutions
- » **Minimization of robot cycle times**
through shorter travel paths and immediate parts depositing on conveyor belt
- » **Easy access in spite of integration**
to the mold and the robot thanks to mobility of the conveyor belt integrated in the protective housing
- » **Cost benefits,**
since safety features for all danger areas are already in place and certified ex works
- » **CE mark included**
for every machine with an insider solution. No more costs for individual approval.



CE certified by type examination



UNILOG B8X

Complex matters simplified

The proven Unilog B8X control system logic with the high-performance hardware is the WITTMANN BATTENFELD solution to make the operation of complex processes easy. To this end, the integrated industrial PC has been equipped with an enlarged intuitive touch-screen control surface. The visualization is the interface to the Windows® 10 IoT operating system, which offers extensive capacity for process control. In addition to the swivel-mounted monitor screen unit, a fixed manual operating panel is installed in the central console.



Unilog B8X Highlights

- » **Operating logic**
with a high degree of self-explanation, similar to modern communication devices
- » **2 major operating principles**
 - Operating/movement functions via tactile keys
 - Process functions on touch screen (access via RFID, key card or key ring)
- » **Process visualization**
via 21.5" touch screen display (full HD), pivoting laterally
- » **New screen functions**
 - Uniform layout for all WITTMANN auxiliaries
 - Recognition of gestures (wiping and zooming by finger movements)
 - Container function – split screen for sub-functions and programs
- » **Status visualization**
uniform signaling system across the entire WITTMANN Group
 - Headline on the screen with colored status bars and pop-up menus
 - AmbiLED display on machine
- » **Operator assistance**
 - QuickSetup: process parameter setting assistant using an integrated material database and a simple query system to retrieve molded part data with machine settings pre-selection
 - Extensive help library integrated

The process in constant view

Wittmann

» SmartEdit

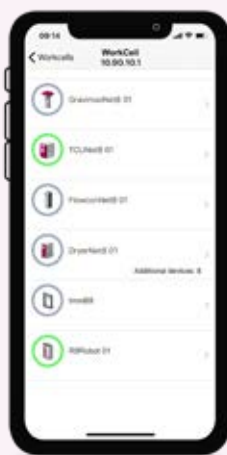
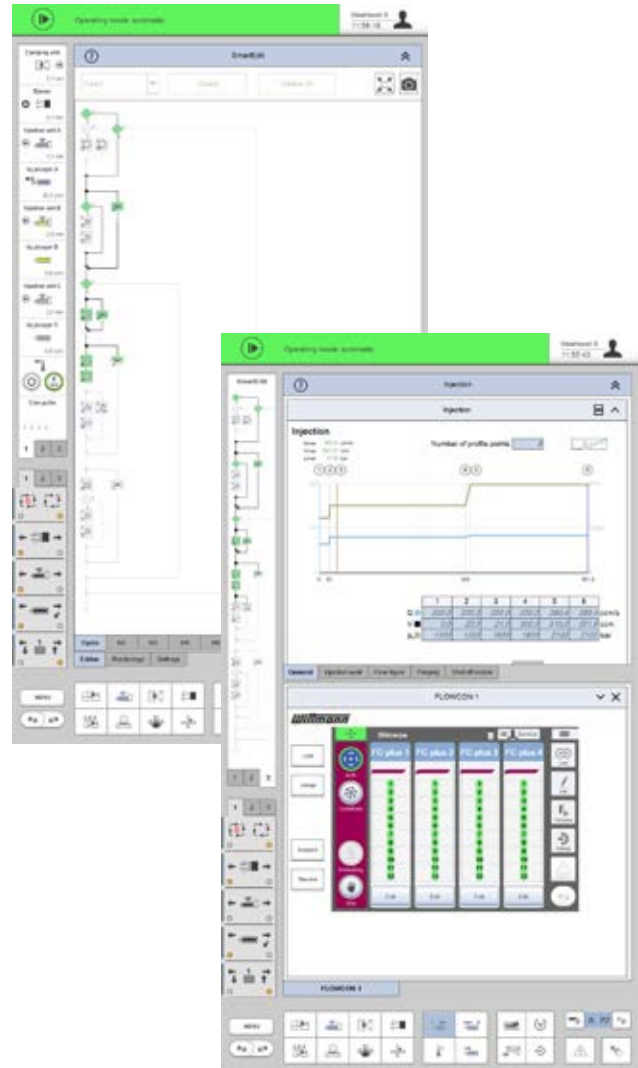
SmartEdit is a visual, icon-based cycle sequence programming facility, which enables direct addition of special functions (core pulls, air valves, etc.) based on a standard process via touch operation on the control system's monitor. In this way, a total user-defined sequence can be compiled from a sequence menu. This machine cycle, visualized either horizontally or vertically, can be adjusted simply and flexibly to the process requirements by finger touch with "drag & drop" movements.

The advantages

- Icon visualization ensures clarity.
- Clear events sequence through node diagram
- Alterations without consequences through "dry test runs"
- Theoretical process sequence can be quickly implemented in practice.
- Automatic calculation of the automation sequence based on the actual set-up data set without machine movements

» SmartScreen

- Partitioning of screen displays to visualize and operate two different functions simultaneously (e.g. machines and auxiliaries)
- Uniform design of the screen pages within the WITTMANN Group
- Max. 3 containers can be addressed simultaneously for the SmartScreen function.
- Adjustments of set values can be effected directly in the set value profile.



Remote communication

» QuickLook 4.0

Production status check via smartphone – simple and comfortable:

- Production data and statuses of all essential auxiliaries in a production cell
- Complete overview of the most important production parameters
- Access to production data, error signals and user-defined data
- The production cell overview offers a clear, simple overview of the production cell's general condition and that of its individual Wittmann 4.0 auxiliaries.

» Global online service network

- Web-Service 24/7: direct Internet connection to WITTMANN BATTENFELD service
- Web-Training: efficient staff training by means of the virtual training center

WITTMANN 4.0

Communication in and with production cells

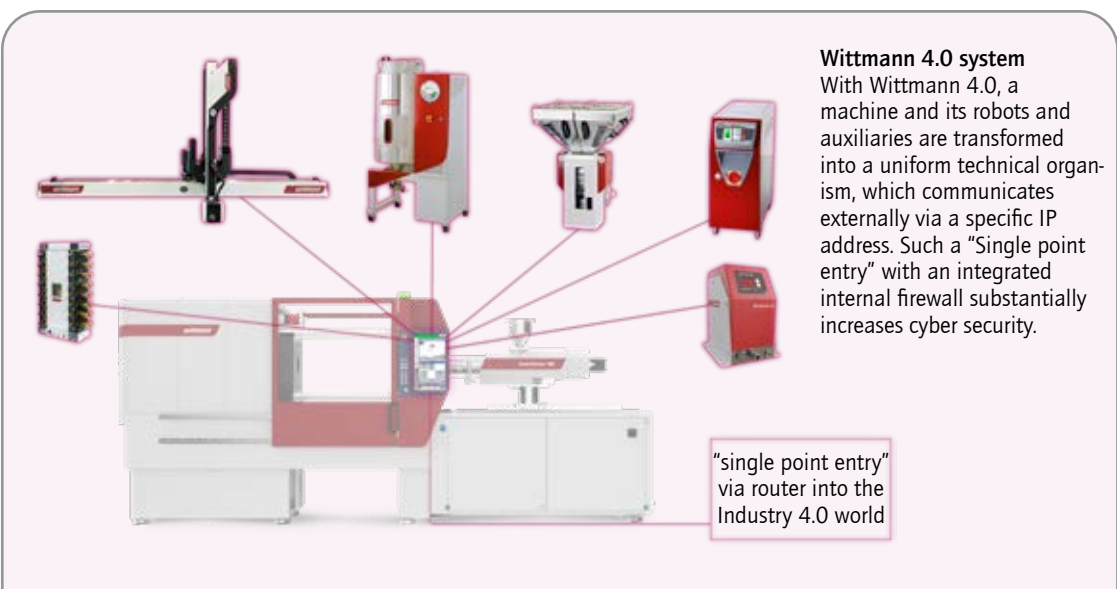
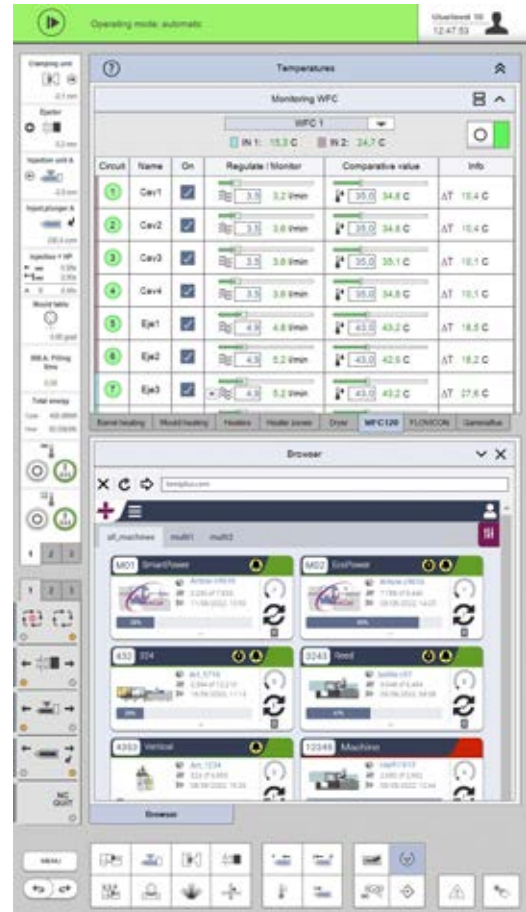
With its communication standard Wittmann 4.0, the WITTMANN Group offers a uniform data transfer platform between injection molding machines and auxiliary equipment from WITTMANN. In case of an auxiliary change, the corresponding visualizations and settings are loaded automatically via an update function, following the principle of "Plug & Produce".

Connection of auxiliaries via Wittmann 4.0

- » **WITTMANN water flow regulator WFC 120, Gravimax blenders and Aton dryers**
 - Units directly addressed and controlled via the machine's control system
 - Joint saving of data in the production cell, the machine and in the network via MES
- » **WITTMANN robots with R9 control system**
 - Operation of robots via the machine's monitor screen
 - High-speed communication between machine and robot to synchronize movements
 - Important machine movements can be set via the R9 robot control system.
- » **WITTMANN Tempro plus D temperature controllers**
 - Setting and control of temperatures via the machine's control system possible
 - All functions can be operated either on the unit or via the machine's control system.

Integration in MES system

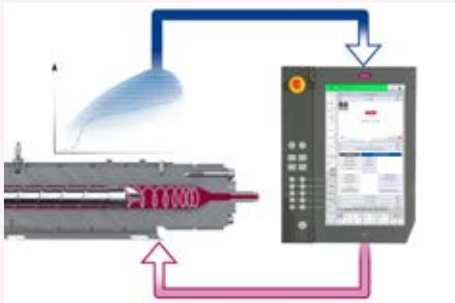
The integration of machines and complete production cells in an MES system is a prerequisite for an efficient and transparent production facility according to the Industry 4.0 concept. Depending on customers' requirements, small and medium-sized companies as well as global players are offered a compact MES solution based on TEMI+. With the Windows® 10 IoT operating system it is also possible to have selected status information from all connected machines on the production floor shown under Smart-Monitoring on the display screen of every machine.



OPTIONS

Modular and flexible

Wittmann



SmartPower B8X

The option highlights

- » **Parallel movements**
 - Additional pump modules for parallel movements
 - for ejectors and core pulls
 - for higher performance (fast injection)
 - Building-up the nozzle contact pressure during mold closing
- » **HiQ packages**

The HiQ packages offer add-ons for the existing Unilog B8X machine control system software. They provide additional features to give the operator more information about the process, and to facilitate operation of the equipment.
- » **Fast mechanical mold change**
 - Quick mold clamping systems are available as an option, ranging from a manually operated bayonet mechanism up to a magnetic plate system.
 - Fast ejector coupling
- » **Fast media connection**

For the ergonomically positioned standard connection points for cooling water, air and core-pull hydraulics, fast coupling plates (individual and system plates) are available as options, as well as power plug systems for the hot-runner heating circuits, temperature and pressure sensors, and coding signals.
- » **WITTMANN auxiliaries**

The comprehensive range of WITTMANN auxiliaries offers the right solutions for all secondary processes of injection molding, including parts handling, material feeding and drying, sprue recycling and mold cooling. Via the optional Wittmann 4.0 integration package, all additional auxiliaries can be integrated into the production cell according to the "Plug and Produce" principle.

APPLICATION TECHNOLOGY B8/B8X

Competence above standard

Clean-room injection molding

For ultra-clean products

Whenever medical components or electronic parts must be produced in an environment free of particles, the SmartPower B8X concept with its easy-to-clean mold space provides a good starting position, which can be adapted to more stringent requirements by optional equipment modules.



Photo: Greiner Bio-One GmbH

Cellmould

Structured foam technology

The production of structured foam parts by targeted addition of pressurized nitrogen dioxide to the plastic melt prior to injection into the mold has been a core competence of WITTMANN BATTENFELD based on in-house R&D for more than 30 years.



Photo: Kunststoff-Institut Lüdenscheid

Airmould

Gas injection

Airmould is the process for gas-assisted injection molding developed by WITTMANN BATTENFELD. Its two variants are the Airmould internal gas pressure process and the external gas pressure process Airmould Contour.



Combimould

Multi-component technology

When two or more plastic materials in different colors or with different attributes must be combined into one part, the SmartPower B8X machines can be equipped with additional injection units in V, L, S or HH configuration and rotary tables with servo drive.



LIM

Liquid Injection Molding

LIM designates the injection molding process to manufacture elastic parts from 2-component LSR (Liquid Silicon Rubber). For processing LSR products, WITTMANN BATTENFELD uses proven modular machines and automation concepts, as well as special plasticizing systems adapted to the viscosity of LSR.



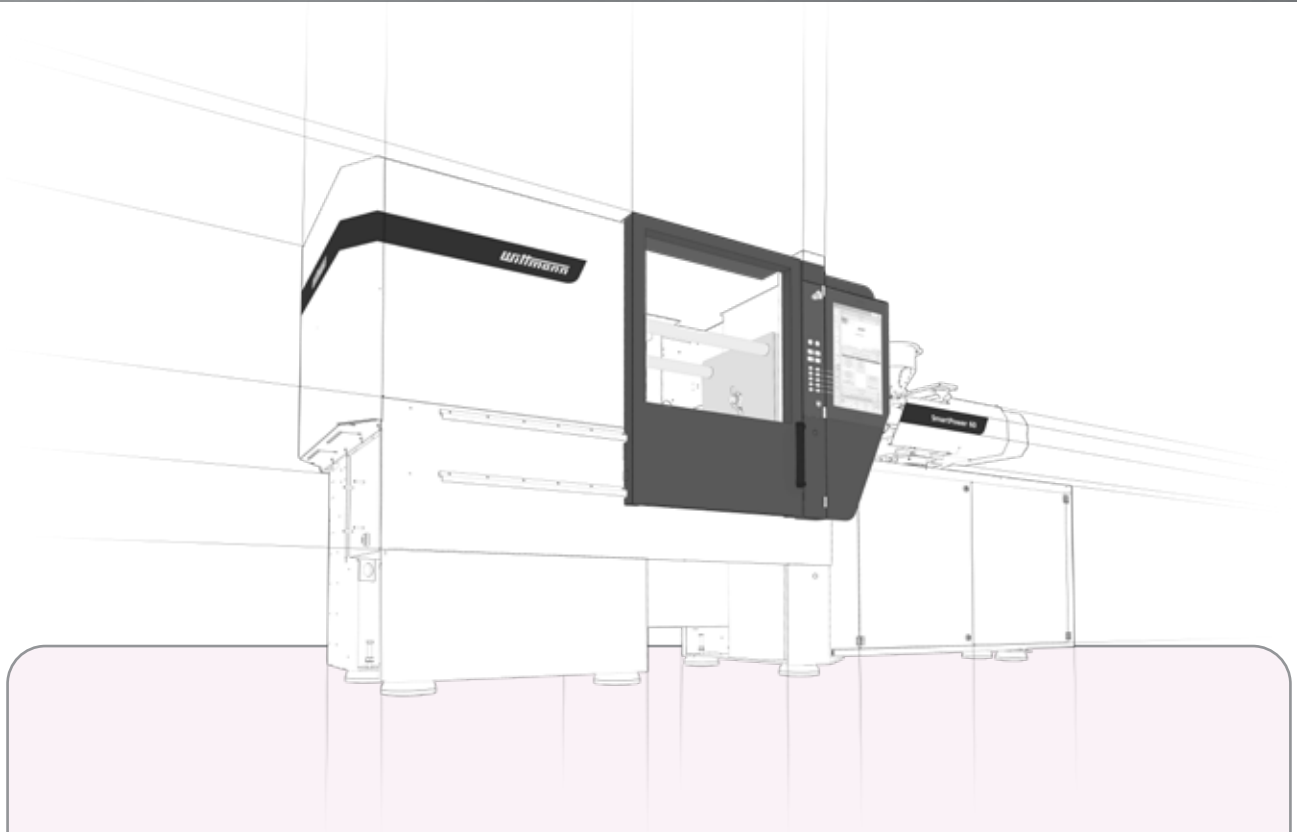
PIM (CIM/MIM)

Powder Injection Molding

Powder injection molding (PIM) is a manufacturing process for series production of components made of metallic or ceramic materials. PIM is the ideal production process for making complex, functional components in large batches and with stringent demands placed on the materials.



TECHNICAL DATA SmartPower B8X



COMBINATIONS OF CLAMPING UNITS/INJECTION UNITS

Clamping unit t	Injection unit									
	70	130	210	350	525	750	1000	1330	1670	2250
38	•	•	•							
50	•	•	•	•						
60	•	•	•	•						
80	•	•	•	•	•					
90	•	•	•	•	•					
110		•	•	•	•	•				
120		•	•	•	•	•				
XL 135				•	•	•	•			
160					•	•	•	•		
180					•	•	•	•		
XL 190						•	•	•	•	
210						•	•	•	•	
240						•	•	•	•	
XL 250						•	•	•	•	•
300						•	•	•	•	•

Material	Factor
ABS	0.88
CA	1.02
CAB	0.97
PA	0.91
PC	0.97
PE	0.71
PMMA	0.94
POM	1.15
PP	0.73

Material	Factor
PP + 20 % Talc	0.85
PP + 40 % Talc	0.98
PP + 20 % GF	0.85
PS	0.91
PVC hard	1.12
PVC soft	1.02
SAN	0.88
SB	0.88

The maximum shotweights (g) are calculated by multiplying the theoretical shot volume (cm³) by the above factor.

Base machine

Drop - voltage 230/400 V/3p+N-TN/TT, 50 Hz

Painting RAL 7047 tele grey / RAL 7016 anthracite / RAL 3004 crimson

Air cooling system for drive unit, water cooling for feeding zone and oil cooler with solenoid valve

One-piece base frame with 3 disposal directions

Injection moulding machine according to machinery directive 2006/42/EG incl. declaration of conformity and CE-marking

Test-run with hydraulic oil HLP32 zinc free according to DIN 51524 T2 / purity level 17/15/12 according to ISO 4406 (Attention: oil is not included in delivery), lubricants according to H2-quality

Printed operating manual incl. user manual on USB flash drive in any EU language acc. to definition of country

Injection molding machine according to machinery directive 2006/42/EG
Levelling pads

Hydraulics

Drive unit S0 with speed controlled servo motor for hydraulic pump to increase the energy efficiency

Hydraulics with oil cooler controlled in water inlet of cooling, oil level monitoring, oil filtration with electrical clogging indicator

Oil preheating of hydraulic drive

Clamping unit

Clamping force and closing and opening forces adjustable

Mold safety program

Moving platen supported by positioned linear guides

Mold platen according to EUROMAP 2, clamping surface metallic bright, rest painted

Fixing holes for robot on fixed platen as per EUROMAP 18

Hydraulic multi stroke ejector

Clamping cylinder plunger induction hardened & hard chrome-plated, ejector piston hard chrome-plated, position sensor with linear potentiometer

Injection unit

Hydraulic screw drive

Injection, holding and back pressure controlled via servo valve with defined nozzle contact pressure

Plasticizing unit AK+ for thermoset processing, 3-zone universal screw, flow-optimized check valve, heater bands up to 350 °C with heat insulation of feed zone grooving

Thermocouple failure monitor

Maximum temperature supervision

Plug-in ceramic heater bands

Temperature control of feed throat integrated

Swivelling injection unit

Linear guides in standard design, position sensor with linear potentiometer

Selectable barrel stand-by temperature

Decompression before and/or after metering

Physical units - bar, ccm, mm/s etc.

Screw protection

Auxiliary screw speed indication

Linear interpolation of holding pressure set values

Bar chart for barrel temperature with set value and actual value display

Selectable injection pressure limitation

Changeover from injection to holding pressure depending on stroke, time and pressure

Open nozzle R35 split

Splash guard and barrel covering in standard execution according to EN ISO 20430, L/D 22 protected via limit switch

Material hopper 6 litres (MH206) for automatical material feed, sliding device with shut-off function for material with sliding guide

Safety gate

Covering injection side - maintenance door screwed together

Safety gate in standard execution, acrylic glass clear / frame RAL 3004 crimson

Safety gate at operator and non-operator side manually operated

Monitored safety gate electrically controlled according to CE on front and rear side

Maintenance-free safety gate locked by electromagnet

Safety gate free for mold change and handling by robot

Electrics

Control zone for nozzle heater band 230 V

AmbiLED-status indicator

Switch cabinet cooling - circulation fan for environment temp. to 30 °C

Emergency stop switch button

USB connection on control unit for printer or network

1 Ethernet interface (switch cabinet)

Integration package Wittmann 4.0 BASE consisting of: Router for integration respectively protection of injection moulding cell in production network

Control system

Control system Unilog B8X - 21,5" multi-touch screen (full HD)

Control panel with selectable haptic keys

Software for operating hours counter

Closing/Opening - 5 profile steps

Ejection forward/back - 3 profile steps

Nozzle forward/back - 3 profile steps

Injection/Holding pressure - 10 profile steps

Screw speed/Back pressure - 6 profile steps

Parts counter with good/bad part evaluation

Purging program through open mold

Stroke zero offset settings

Start-up program

Switchover to holding pressure MASTER/SLAVE by injection time, screw stroke/injection volume and injection pressure

Self-teaching temperature controller

Display of temperature inside electrical cabinet

Seven-day timer

Access authorization via RFID system (1 x check card IT-level-15, 1 x token customer level-30 and 1 x token customer service level-20 incl. in delivery)

Freely configurable status bar

Physical, process-related units

Automatic dimming

Logbook with filter function

User programming system (APS)

Userpage

Note pad function

Cycle time analysis

Hardcopy function

Internal data storage via USB connection or network

Online language selection

Online selection of imperial or metric units

Time monitoring

Basic Quality Monitoring (1 freely configurable network connection, quality table with 1000 storage depth, events protocol (logbook) for 1000 events, actual value graphics with 5 curves, 1 envelope curves monitoring)

Injection integral supervision, Metering integral supervision

Alarm message via e-mail

SmartEdit - sequence editor

QuickSetup - assistance program for initial parameter setting

Energy consumption monitoring for motors and heating

2 outputs, freely programmable

Base machine

Special voltage
Handling package with open machine safety gate on non operator side
Parts hopper w/o separation of sprues, good/bad parts or photoelectric ejection check
Non-standard mold height/opening stroke
Machine frame increased
Special paint

Hydraulics/Pneumatics

Drive unit with speed controlled servo motor for hydraulic pump incl. additional pump for core pull movement, parallel ejection, fast injection and/or hydraulic mold shut-off nozzle
Raw filter in water inlet of cooling incl. adapter with ball valve for oil maintenance on oil tank
Hydraulic core pull for clamping plate, interface according to EUROMAP 13, incl. or without core pull pressure release
Pneum. core pull on clamping plate/nozzle plate
Hydraulic, pneumatic manifolds for one mold shut-off nozzle or more
Air valves on nozzle plate/clamping plate
Compressed air pressure maintenance unit incl. 1 or more way pressure regulation incl. directional exhaust valve with blocking function

Clamping unit

Support for middle plate or heavy molds
Mold platen according to SPI, JIS, T-slots
Mold platen incl. cooling channels
Manuel tie-bar retract device
Hydraulic ejector in reinforced execution
Ejector pressure/speed controlled by P/Q servo valve
Unscrewing device in lieu of ejector
Double check valve to keep ejector in end-position
Ejector cross according to EUROMAP/SPI, JIS
Mechanical or pneumatic ejector coupling
Ejector platen safety
Mechanical mold safety mechanism

Injection unit

Linear guides in standard design, position sensor with non-contact stroke transducer
Splash guard and barrel covering in standard execution according to EN 201, L/D 22 protected via transponder switch
High torque hydraulic screw drive
Plasticizing unit AK++ in high wear and corrosion resistant execution
Plasticizing unit AKCN in wear and corrosion resistant execution, for processing PMMA and ABS and PC
Grooves in the feeding zone
Barrier section, screw with mixing section
Ball type screw tip
Melt pressure transducer, melt temperature sensor
Heater bands up to 450 °C
Plasticizing unit in special execution for LIM, MIM, CIM, PVC, Cellmould
Open nozzles in special execution
Needle type shut-off nozzle operated pneumatically
Pneumatic cross-bolt type shut-off nozzle
Open Airmould nozzle, pressure controlled
Barrel covering and splash guard in special execution
Vacuum package incl. vacuum pump
Material hopper in special execution
Hopper magnet

Safety gate

Safety gate clamping side, rear side and/or operator side elevated, lowered or extended
Insider package WITTMANN rear side incl. conveyor belt
Safety gate clamping side electrically operated
Front side gate safety system for manual part removal incl. clearance of ejector

Cooling and conditioning

Cooling water distributor with/without blow-off valve
Solenoid valve for cooling water distributor
Machine cooling by T-piece in inlet pipe
Filter back flushable/water pressure supervision in inlet pipe
Distributor block on nozzle plate/clamping plate
WFC120 integrated into control system

Electrics

Emergency stop switch button in control panel and on non operator side
Temperature control zones for hot runner
Acoustic element integrated in signal lamp
Socket combination
Additional fan in electric switch cabinet for increased environment temperature
Cabinet air conditioner
Interface for robot, conveyor belt, TCU, dosing unit, Airmould, mold surveillance, production data logging system, RJG eDart, Priamus BlueLine, danger zone boundary, ejection in mold middle plate, brushing device, relay signals, vacuum pump

Control system

Cavity pressure switchover
BNC sockets for injection process analysis
Expert Quality Monitoring (4 freely configurable network connections, quality table with 10000 storage depth, events protocol (logbook) for 10000 events, actual value graphic with 16 curves, 4 envelope curves monitoring, SPC charts, trend diagrams)
Mold identification
Special programs on customer request
HiQ Cushion - melt cushion control
HiQ Flow - injection integral control
HiQ Melt - monitoring of material quality
Software Tandemmould, multiple data sets
Energy consumption analysis
Clamp force supervision
Injection compression and venting program
Initiation of next cycle by closing safety gate
Special program ejector ejection of cold slug
Additional output card/input card, freely programmable
Integration package Wittmann 4.0

Additional equipment

Plinth for robot
Tool kit
Lighting in mold space
Mold clamping systems in mechanical, electrical or hydraulic execution
Integration package (robot, feeder, dosing unit, TCU, mold integration)
WITTMANN BATTENFELD web service during warranty period free of charge
Remote control package

The Wittmann logo is a stylized, italicized wordmark in a dark red color, set against a white background that is part of a red-to-white gradient bar at the bottom of the page.

WITTMANN BATTENFELD GmbH

Wiener Neustädter Strasse 81

2542 Kottlingbrunn | Austria

Tel.: +43 2252 404-0

info@wittmann-group.com

www.wittmann-group.com